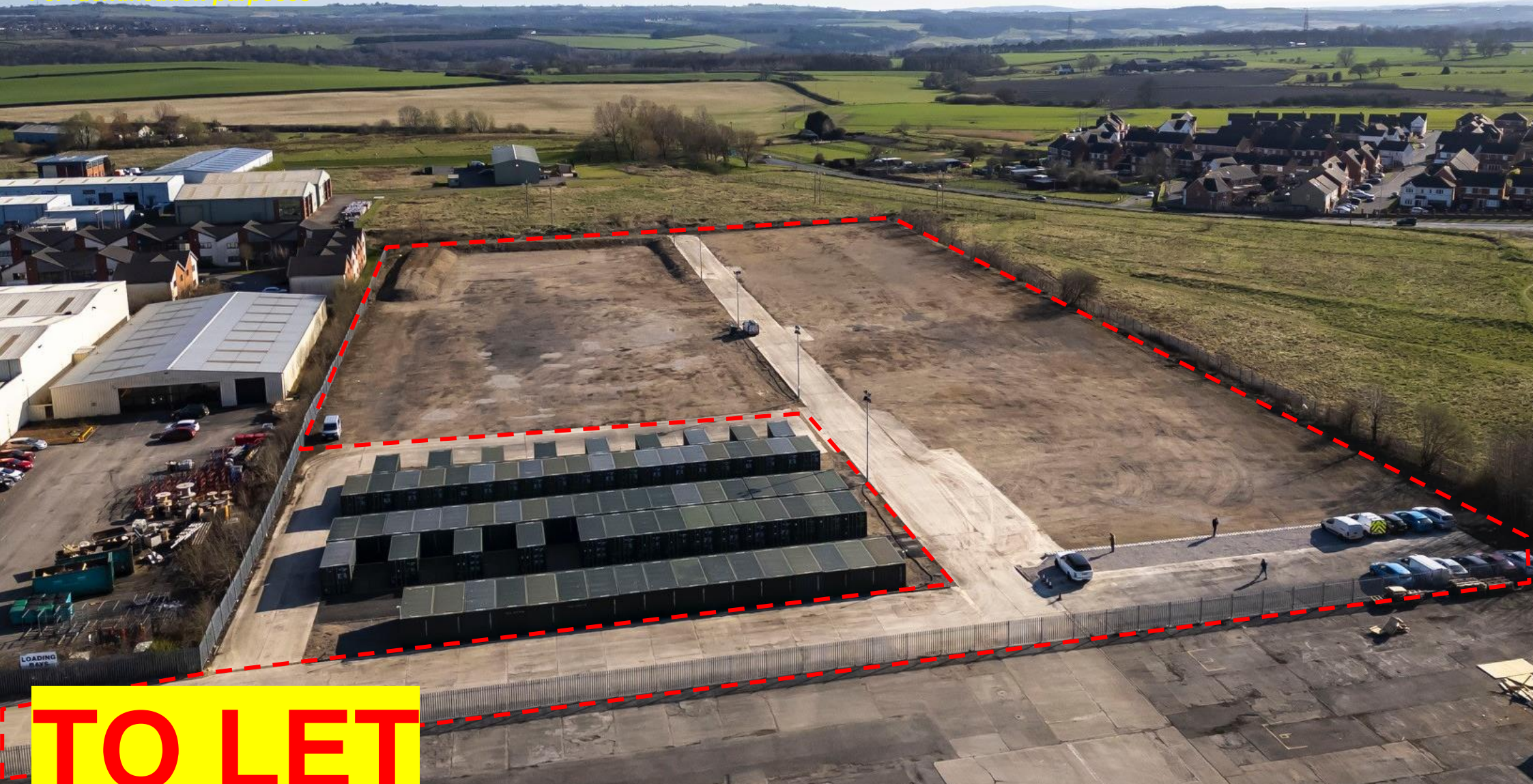


*For identification purposes*



**TO LET**

## Open Storage Land

Meadowfield Industrial Estate, Durham DH7 8RJ

CONNECT  
PROPERTY  
01642 602001



LOCATION

Meadowfield Industrial Estate is located approximately 2.5 miles to the west of Durham and 19 miles south of Newcastle. The property is accessed off St John’s Road, the main thoroughfare on the industrial estate linking the property directly to Durham city centre via both Browney Lane and theA690.Durham has excellent transport links to the A1 and the wider road network whilst Durham Rail Station is a main stop on the East Coast mainline with links to London in just under three hours.

TERMS

Sites are available To Let. Further information is available upon application.

RATING ASSESSMENT

Interested parties are advised to contact the Local Rating Authority to obtain the precise rates payable.

DESCRIPTION

The site offers excellent and rare industrial open storage accommodation and benefits from 24/7access with secure fencing, electric sliding security gate and CCTV monitoring. The site also benefits from power connection and floodlighting.

SITE

We have included the gross approximate total site area below;

Plot A	0.71 Ha	1.76 Acres
Plot B	0.55 Ha	1.36 Acres
Plot C	0.49 Ha	1.22 Acres
Plot D	0.08 Ha	0.20 Acres

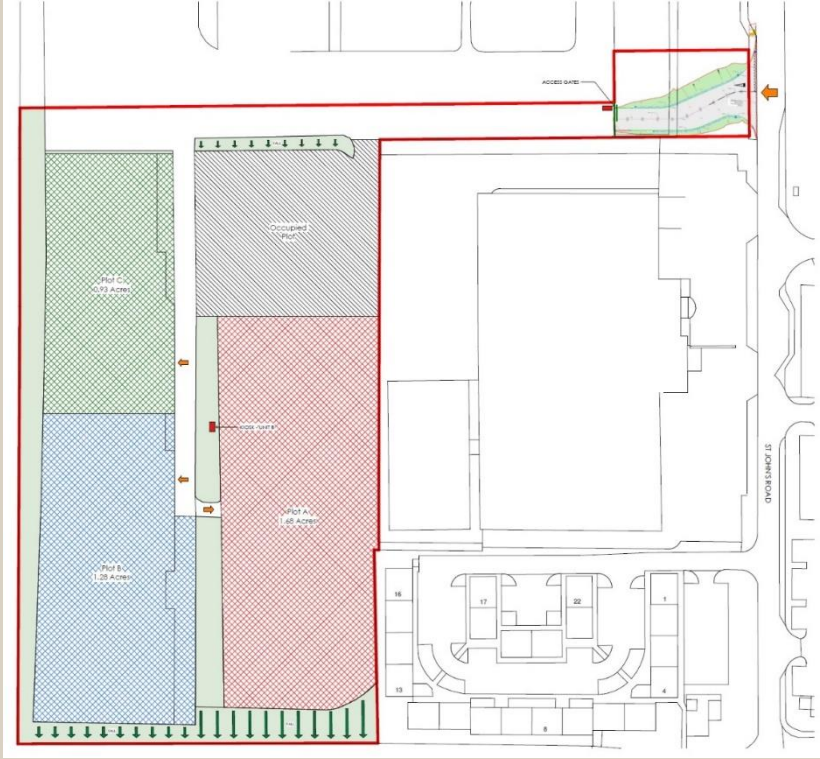
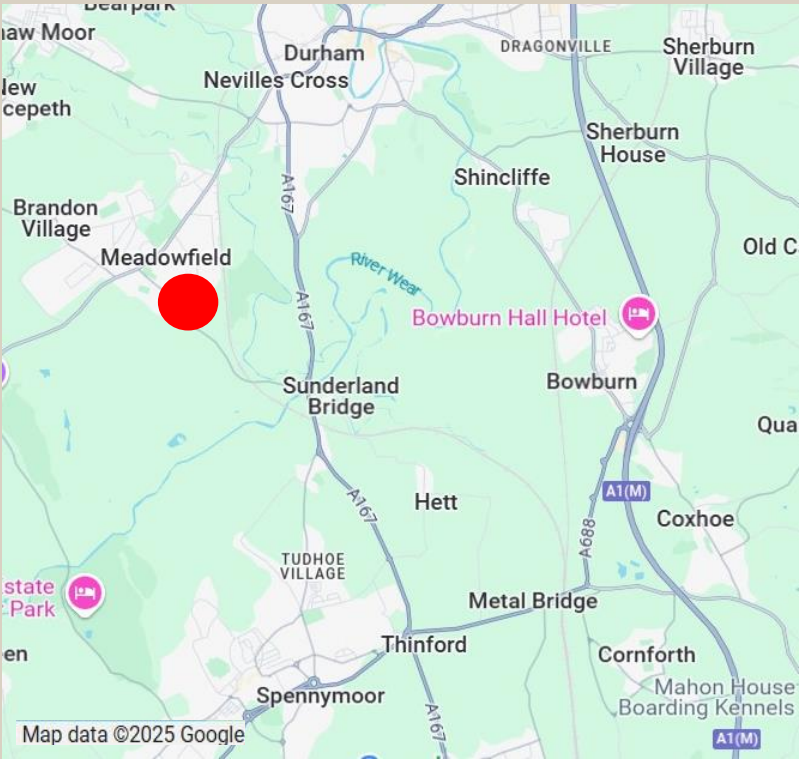
PLANNING

Use Class B8

VIEWING

Strictly through the joint agents  
Connect Property North East:

Jonathan Simpson ddl: 01642 704931  
Email: [jonathan@cpne.co.uk](mailto:jonathan@cpne.co.uk)



**IMPORTANT NOTICE:** whilst every reasonable effort has been made by Connect Property North East to ensure accuracy, interested parties are strongly advised to take appropriate steps to verify by independent inspection or enquiry all information for themselves and to take appropriate professional advice. (i) No description or information given about the property or its value, whether written or verbal or whether or not in these particulars ('information') may be relied upon as a statement of representation or fact. Connect Property North East nor its employees have any authority to make any representation and accordingly ny information given is entirely without responsibility on the part of Connect Property North East or the seller / lessor. (ii) Any photographs show only certain parts of the property at the time they were taken. Any areas, measurements or distances given are approximate only. (iii) Any reference to alterations to, or use of any part of the property is not a statement that any necessary planning, building regulations or other consent has been obtained. These matters must be verified by any intending buyer / lessee. (iv) Any buyer/lessee must satisfy himself by inspection or otherwise as to the correctness of any information given. (v) VAT is applicable unless expressly stated otherwise. Registered Company Number 9404628