

TO LET

Unit E2, Tyne Tunnel Estate,
North Shields, NE29 7XJ



CGI showing unit post refurbishment

Warehouse Under Refurbishment 2,712 m² (29,192 sq ft)

- Detached warehouse undergoing comprehensive refurbishment
- Prominent location on main Tyne Tunnel Estate spine road (High Flatworth)
- Within close proximity of A19 and Tyne Tunnel entrance
- Warehouse area: 2,450 m² (26,371 sq ft)
- Office and amenities: 262 m² (2,821 sq ft)
- Rent: £205,000 per annum

SITUATION

Tyne Tunnel Estate is strategically located adjacent to the A19 Tyne Tunnel approach and the A1058 Coast Road providing immediate access to the region's main road network and in close proximity to the Port of Tyne.

Newcastle City Centre is located less than 7 miles to the west via the A1058 with Sunderland City Centre 12 miles to the south via the A19.

The estate is home to over 50 occupiers working in manufacturing, logistics and trade sectors boasting brand names including Lookers, Kitwave, Marshalls, Fishers Services, Howdens, Jewson and Screwfix.

DESCRIPTION

Unit E2 is a detached unit undergoing refurbishment providing open plan manufacturing / warehouse space, office accommodation and amenities. In summary it benefits from the following:

Office Accommodation

- Newly refurbished, open plan office space
- Staff amenities including WCs and canteen area
- High efficiency electric heating
- Staff car park
- EV charging points

Production / Warehouse

- Open plan warehousing / manufacturing space
- Clear internal height of 5.25 m
- 4 No. ground level loading doors
- LED lighting

ENERGY PERFORMANCE

The property will be reassessed for energy performance on completion of the refurbishment.

For further details please contact:



ACCOMMODATION

On completion the property will have the following Gross Internal Floor areas.

	M ²	Sq Ft
Warehouse	2,450	26,371
Office / Staff Amenities	262	2,821
Total (GIA)	2,712	29,192

RATING

According to the Valuation Office Agency the property has a rateable value of £122,000 effective 1st April 2023. For further information please visit www.voa.gov.uk

TERMS

Unit E2 is available by way of a new fully repairing and insuring lease for a term of years to be agreed at a rent of £205,000 per annum.

VAT

All prices and rents are quoted exclusive of Value Added Tax and will be subject to VAT at the prevailing rate.

VIEWING

Strictly by appointment through agents.

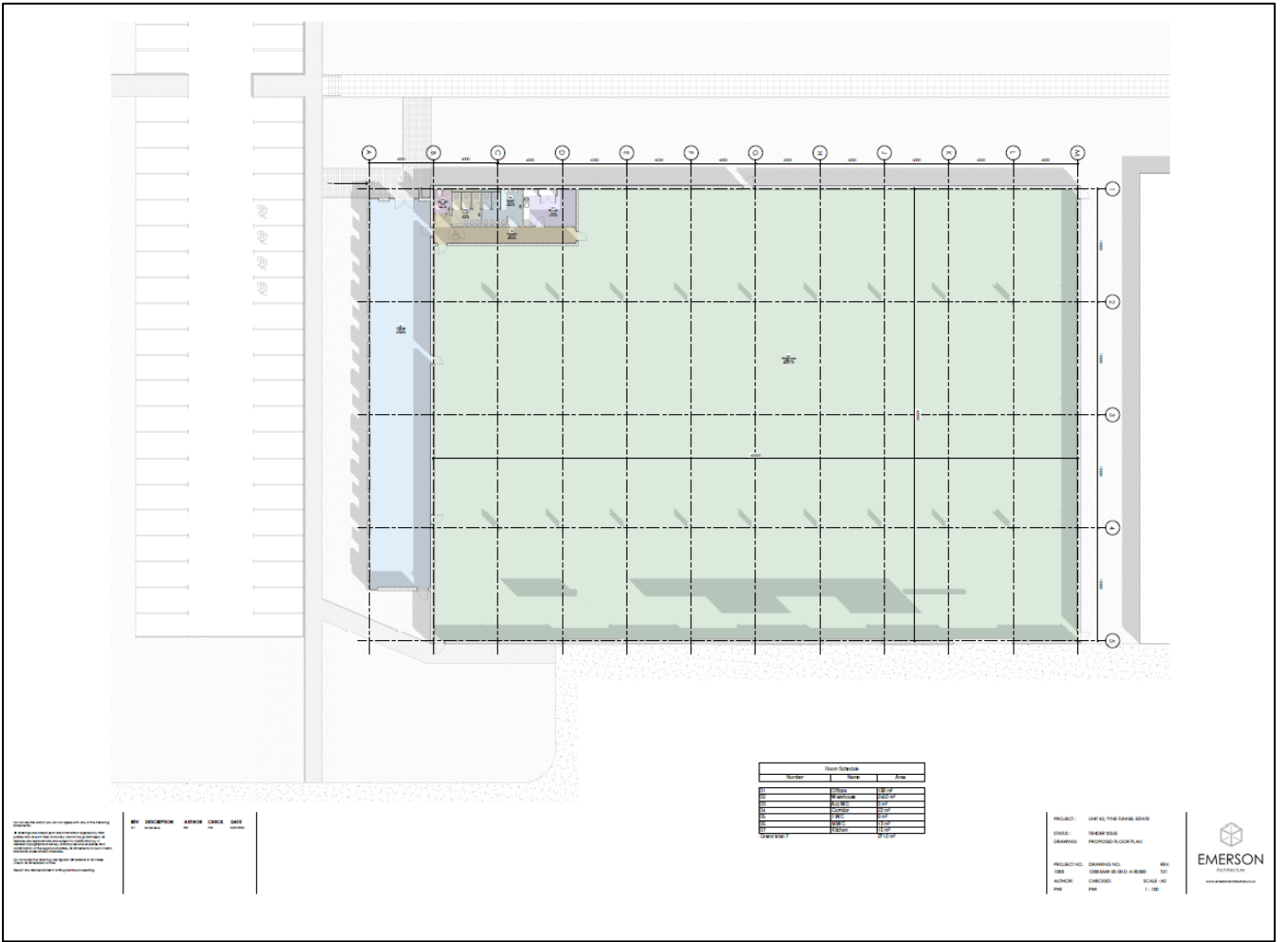
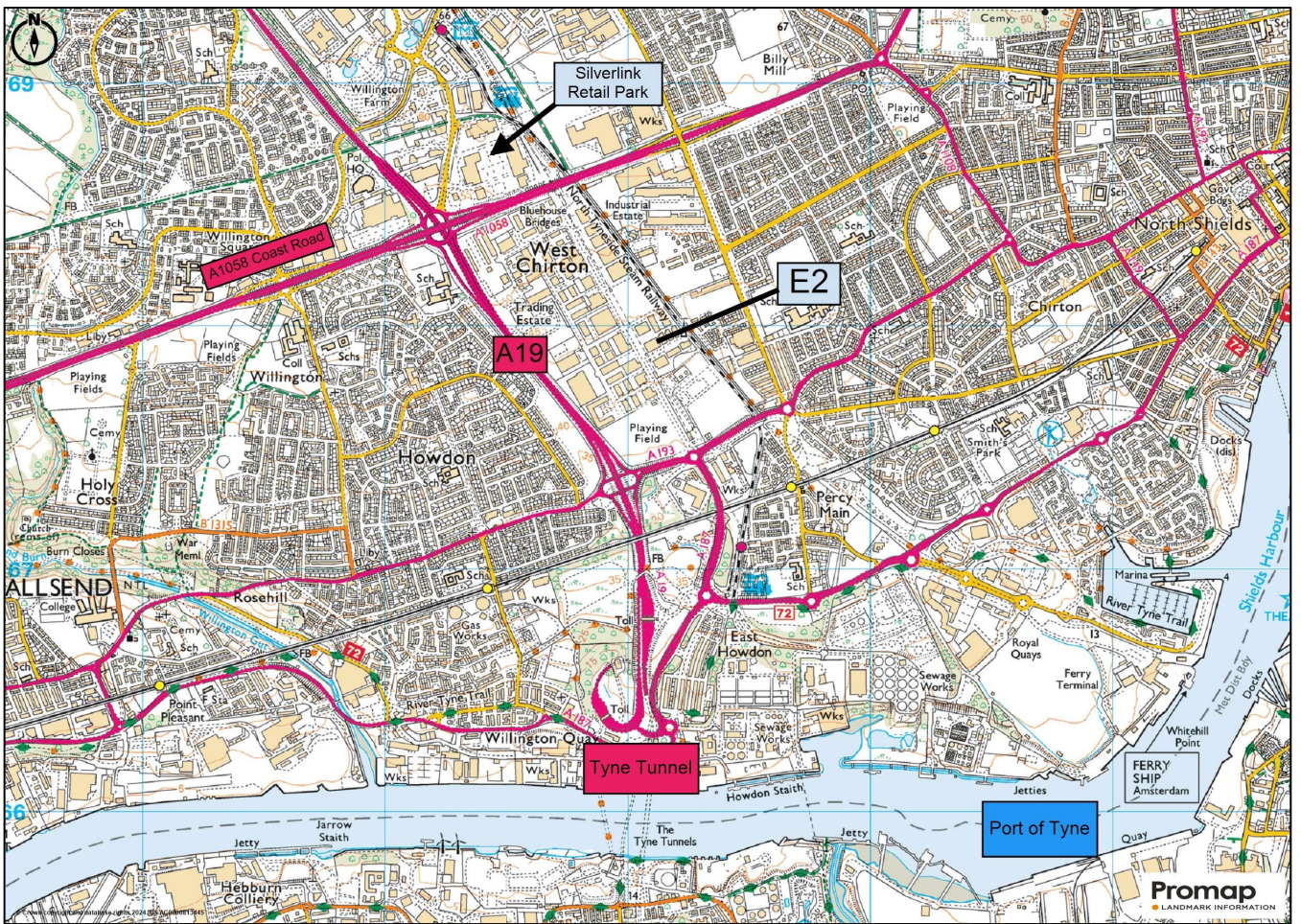


MARK PROUDLOCK
0191 5945019 or 07766 968891
Mark.proudlock@knightfrank.com

JAMIE PARKER
0191 5945026 or 07974 398194
Jamie.parker@knightfrank.com

Subject to Contract

Brochure: July 2024



IMPORTANT NOTICE

- (1) Particulars: These particulars are not an offer or contract, nor part of one. Any information about price or value contained in the particulars is provided purely as guidance, it does not constitute a formal valuation and should not be relied upon for any purpose. You should not rely on statements by Knight Frank in the particulars or by word of mouth or in writing ("information") as being factually accurate about the property, its condition or its value. Neither Knight Frank LLP nor any joint agent has any authority to make any representations about the property. No responsibility or liability is or will be accepted by Knight Frank LLP, seller(s) or lessor(s) in relation to the adequacy, accuracy, completeness or reasonableness of the information, notice or documents made available to any interested party or its advisers in connection with the proposed transaction. All and any such responsibility and liability is expressly disclaimed.
- (2) Photos, Videos etc: The photographs, images, property videos and virtual viewings etc. show only certain parts of the property as they appeared at the time they were taken. Areas, measurements and distances given are approximate only.
- (3) Regulations: Any reference to alterations to, or use of, any part of the property does not mean that any necessary planning, building regulations or other consent has been obtained. A buyer or lessee must find out by inspection or in other ways that these matters have been properly dealt with and that all information is correct.
- (4) VAT: The VAT position relating to the property may change without notice.
- (5) Financial Crime: In accordance with the Money Laundering, Terrorist Financing and Transfer of Funds (Information on the Payer) Regulations 2017 and Proceeds of Crime Act 2002 Knight Frank LLP may be required to establish the identity and source of funds of all parties to property transactions.
- (6) To find out how we process Personal Data, please refer to our Group Privacy Statement and other notices at <https://www.knightfrank.com/legals/privacy-statement>.

Knight Frank is the trading name of Knight Frank LLP. Knight Frank LLP is a limited liability partnership registered in England and Wales with registered number OC305934. Our registered office is at 55 Baker Street, London W1U 8AN where you may look at a list of members' names. If we use the term 'partner' when referring to one of our representatives, that person will either be a member, employee, worker or consultant of Knight Frank LLP and not a partner in a partnership.