

to let



The industrial property specialists

UNIT 6 PEASE ROAD NORTH WEST INDUSTRIAL ESTATE PETERLEE SR8 2RD



- MID TERRACE WAREHOUSE / WORKSHOP WITH COMMUNAL PARKING / LOADING
- TOTAL GIA: 595.23 M² (6,407 SQ FT)
- FLEXIBLE TERMS / COMPETITIVE RENTS
- GOOD ACCESS TO MAIN ROAD NETWORK AND LOCAL SERVICES / AMENITIES

www.frewpain.co.uk t: 0191 229 9517 e: james.pain@frewpain.co.uk



Frew Pain & Partners, Collingwood Buildings,
38 Collingwood St, Newcastle upon Tyne, NE1 1JF

LOCATION

The property and site are located on Davy Drive, North West Industrial Estate, Peterlee.

The estate is located near the main A19 trunk road and offers excellent communication links both North and South.

The surrounding estate is mainly industrial offering a mixed selection of warehouse and manufacturing units, of varying sizes.

The exact location is shown on the attached plan.

DESCRIPTION

The subject property offers a mid terrace workshop / warehouse set within a larger industrial estate.

The subject property is of steel portal frame design with brick and blockwork infill walls and flat metal sheet / felted roof over.

Internally the property offers an effective eaves height of 3.8m rising to 4.2m, concrete floors and LED lights.

There are several open plan offices / reception and WC facilities located to the front of the unit.

Vehicular access to the accommodation is via a single steel automatic security shutter.

Externally there is a communal yard and car parking.

ACCOMMODATION

From onsite measurements the following areas have been calculated:

Workshop 595.23 m²
(inc Office / WC facilities)

**TOTAL GIA 595.23 M²
(6,407 SQ FT)**

SERVICES

The property benefits from all mains services.

It is recommended that all interested parties contact the local service providers to ensure that the services are installed and operational.

BUSINESS RATES

We understand from the Local Rating Authority that the premises will need to be re assessed upon occupation.

(It is recommended that all interested parties contact the Local Authority to confirm RV figures.)

TENURE

The property is available by way of new Full Repairing and Insuring lease for a term of years to be agreed.

SERVICE CHARGE

A nominal service charge is payable for the up keep and maintenance of common areas.

RENT

Our client is seeking a rental in the region of £34,598 pa.

A rent bond of 3 months will be payable and held for the duration of the lease.

Incentives may be available subject covenant and lease term.

ENERGY PERFORMANCE CERTIFICATE

C – 70

Full details upon request.

VAT

VAT will be chargeable at the prevailing rate.

LEGAL COSTS

The ingoing tenant will be responsible for the landlords' reasonable legal costs in connection with any transaction.

VIEWING

By prior appointment with Frew Pain & Partners, contact:

James E F Pain

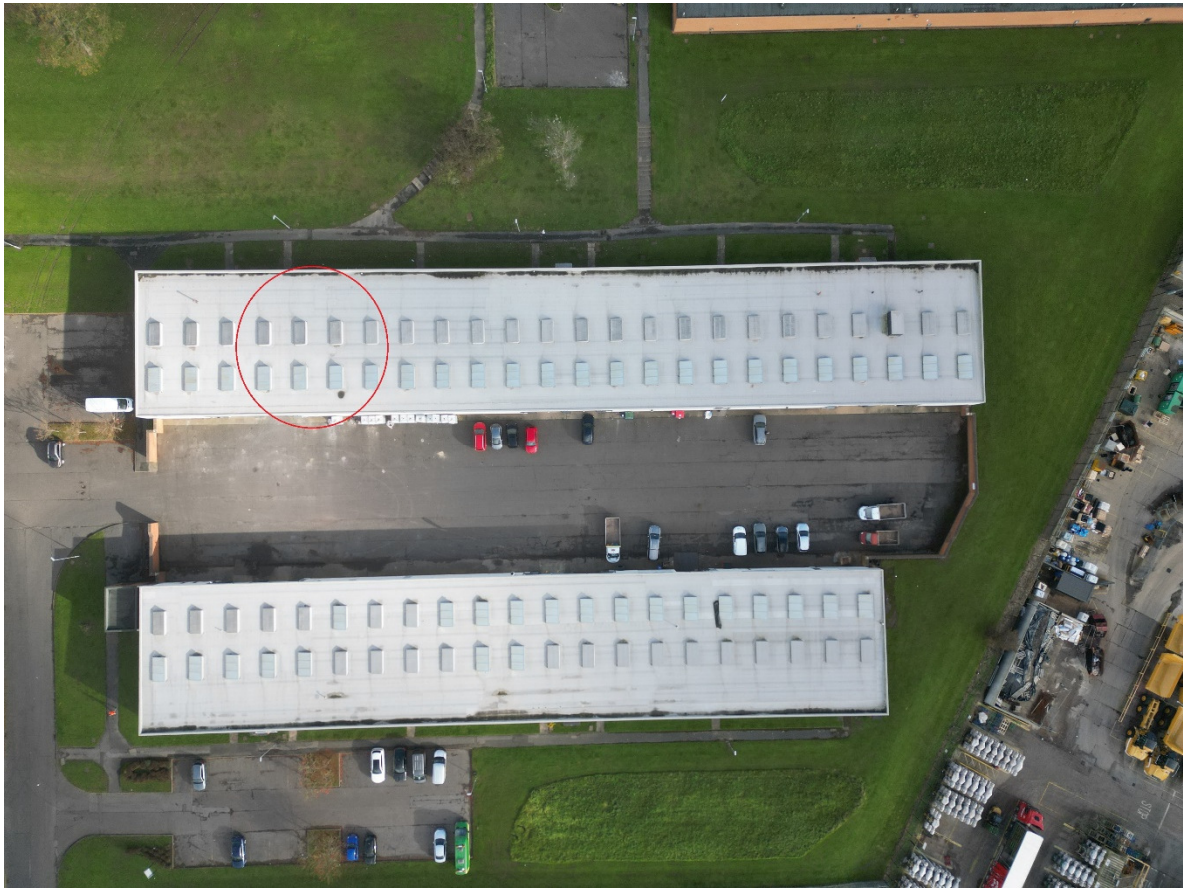
Tel: 07841 871710

Email:

james.pain@frewpain.co.uk

Dec 2023

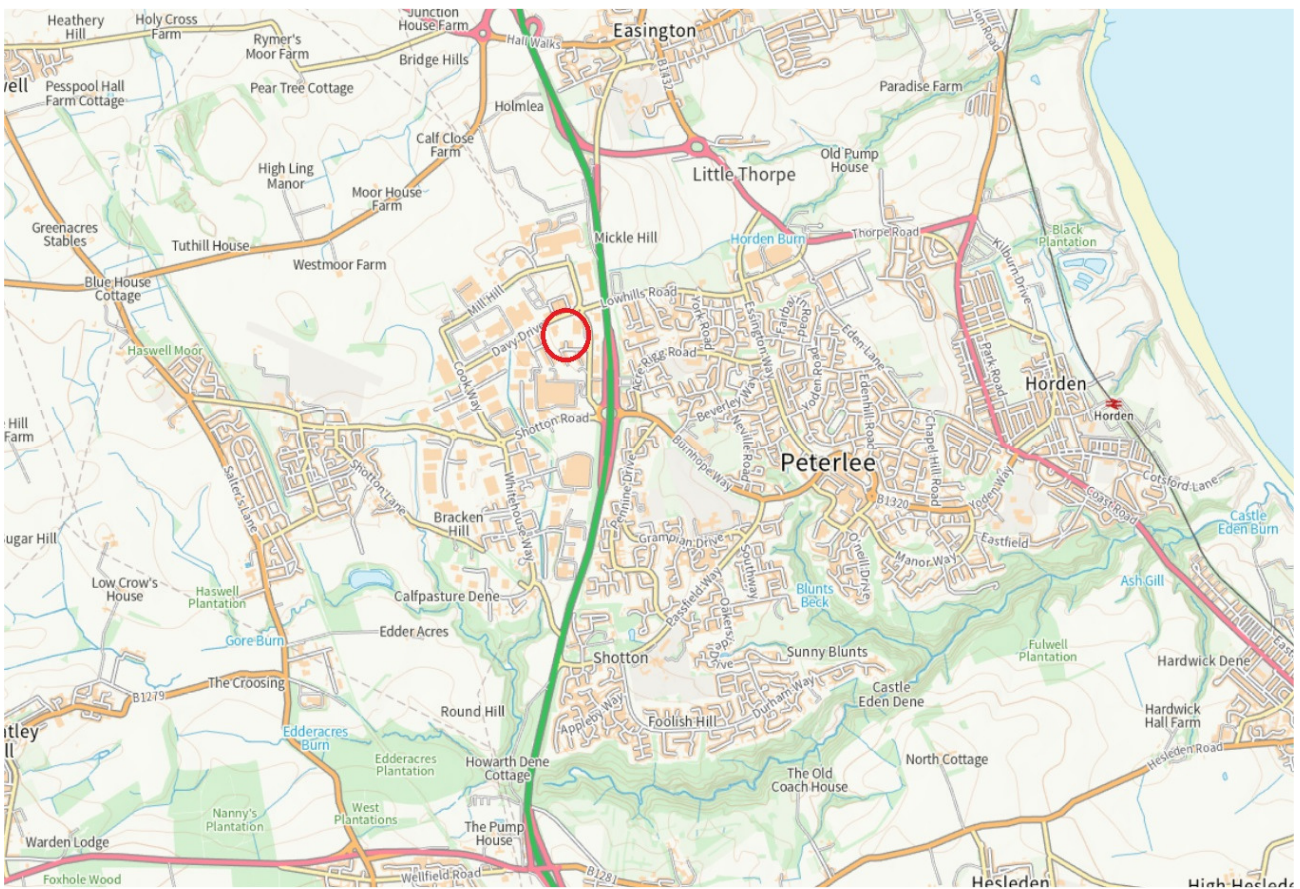
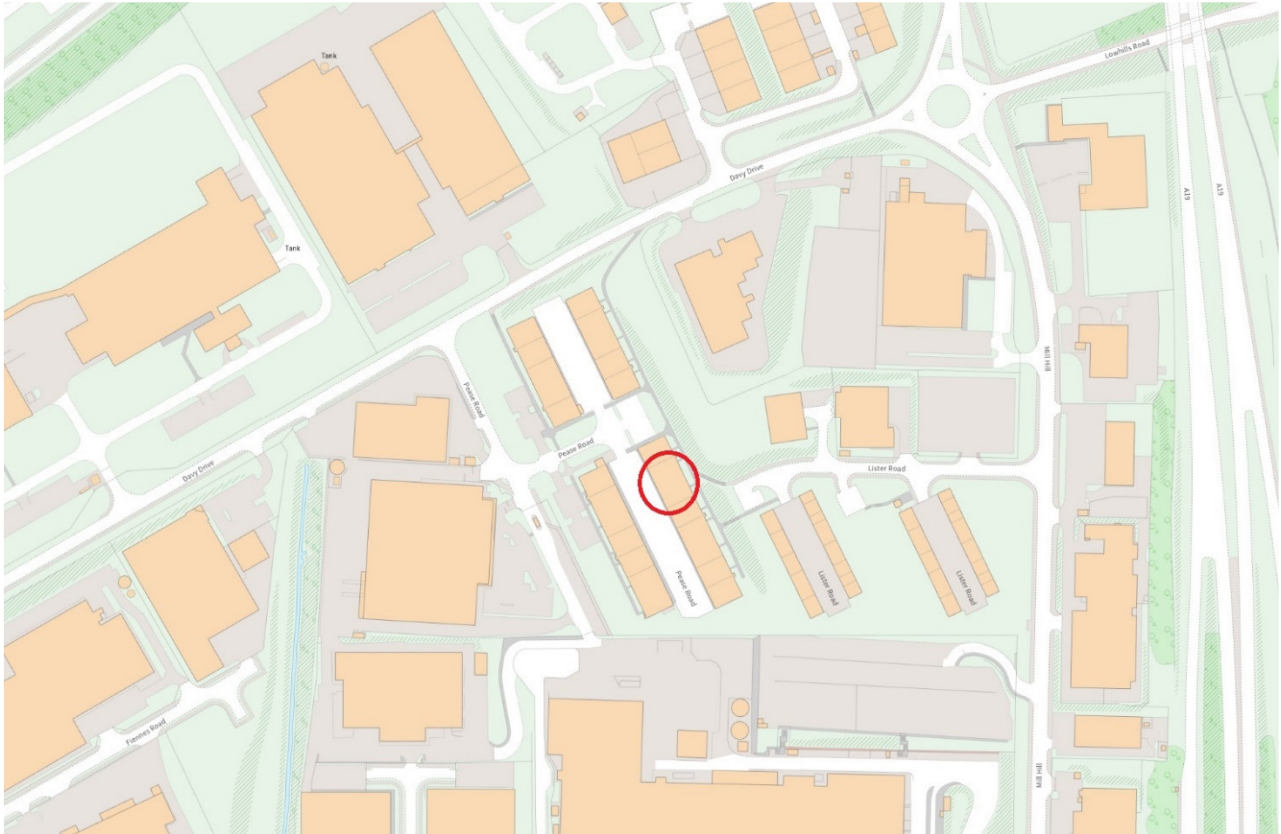




F492 Printed by Ravensworth 01670 713330

www.frewpain.co.uk t: 0191 229 9517 e: james.pain@frewpain.co.uk

IMPORTANT NOTICE: FREW PAIN & PARTNERS LTD for themselves and for the vendors and lessors of the property give notice that: (i) These particulars are set out as a general outline only for the guidance of intending purchasers or lessees and do not constitute, nor constitute part of any offer or contract. (ii) All descriptions, dimensions, reference to condition and necessary permissions for use and occupation and other details are given in good faith and are believed to be correct but without responsibility on the part of FREW PAIN & PARTNERS LTD or their clients. Any intending purchasers or tenants should not rely on them as statements or representations of fact but must satisfy themselves by inspection or otherwise as to the correctness of each of them. (iii) No person, either principal or employee, at FREW PAIN & PARTNERS LTD has any authority to make or give any representation or warranty in relation to this property. (iv) Any reference to plant, machinery, equipment, services, fixtures or fittings shall not imply that such items are fit for their purpose or in working order. FINANCE ACT 1989: Unless otherwise stated all prices and rents are quoted exclusive of VAT. PROPERTY MISDESCRIPTIONS ACT 1991: Every reasonable effort has been made by FREW PAIN & PARTNERS LTD to ensure accuracy. All interested parties are advised to take appropriate steps to verify by independent inspection or enquiry all information for themselves and to take the appropriate professional advice.



F492 Printed by Ravensworth 01670 713330

www.frewpain.co.uk t: 0191 229 9517 e: james.pain@frewpain.co.uk

IMPORTANT NOTICE: FREW PAIN & PARTNERS LTD for themselves and for the vendors and lessors of the property give notice that: (i) These particulars are set out as a general outline only for the guidance of intending purchasers or lessees and do not constitute, nor constitute part of any offer or contract. (ii) All descriptions, dimensions, reference to condition and necessary permissions for use and occupation and other details are given in good faith and are believed to be correct but without responsibility on the part of **FREW PAIN & PARTNERS LTD** or their clients. Any intending purchasers or tenants should not rely on them as statements or representations of fact but must satisfy themselves by inspection or otherwise as to the correctness of each of them. (iii) No person, either principal or employee, at **FREW PAIN & PARTNERS LTD** has any authority to make or give any representation or warranty in relation to this property. (iv) Any reference to plant, machinery, equipment, services, fixtures or fittings shall not imply that such items are fit for their purpose or in working order. **FINANCE ACT 1989**: Unless otherwise stated all prices and rents are quoted exclusive of VAT. **PROPERTY MISDESCRIPTIONS ACT 1991**: Every reasonable effort has been made by **FREW PAIN & PARTNERS LTD** to ensure accuracy. All interested parties are advised to take appropriate steps to verify by independent inspection or enquiry all information for themselves and to take the appropriate professional advice.