



CLOTH MARKET NEWCASTLE UPON TYNE NE1 1EH

OFFICES FROM 2,531 TO 10,808 SQ FT

# NUMBER TWO CATHEDRAL SQUARE

No.2 Cathedral Square is at the vibrant heart of Newcastle City Centre, delivering an outstanding business solution. The City's historic cathedral and castle provide a magnificent backdrop to the development which is surrounded by a lively array of amenities.

No.2 Cathedral Square provides all you need from an office; highly presentable for your clients and superbly comfortable for your employees.

Occupiers at Cathedral Square include BUPA, The Co-Operative Bank Plc and Towergate.

## AN IMPRESSIVE POSITION

A landmark in the prime city core, Cathedral Square provides ease of access to the city's shopping, leisure and upgraded Metro and railway station.

Newcastle's renowned cosmopolitan lifestyle, theatres, Centre for Life and Grey Street with restaurants including Carluccio's, Browns and Café Rouge are all within a short walk.

## AN OUTSTANDING SPECIFICATION

- Prestigious contemporary reception
- Energy efficient comfort cooling
- Full access raised floors
- Category 2 lighting in recessed high specification metal ceiling
- Flexible open plan accommodation
- DDA compliant
- New decoration and carpets
- 24 hour on site security and CCTV system
- Secure lower ground floor car parking
- 24 hour access
- EPC Rating D-93

## BASEMENT STORAGE

Secure basement storage space available.



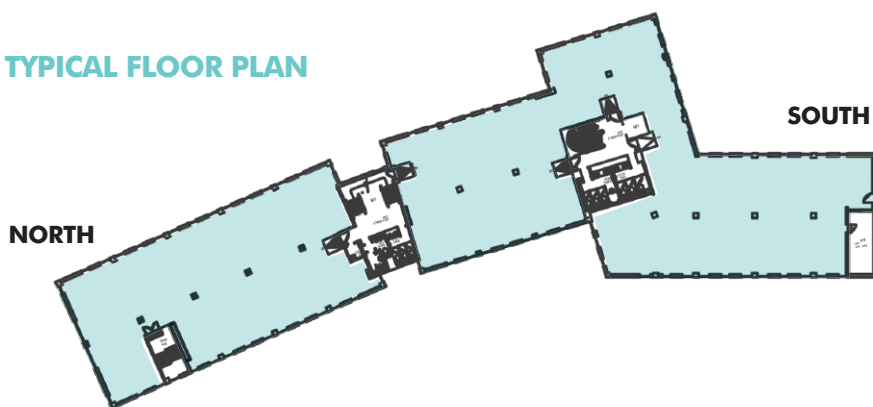
## AVAILABLE ACCOMMODATION

SUITE	SQ M	SQ FT
Third Floor North	385.7	4,152
Third Floor Centre	235.1	2,531
First Floor North	383.2	4,125
<b>TOTAL</b>	<b>1,004</b>	<b>10,808</b>





**TYPICAL FLOOR PLAN**

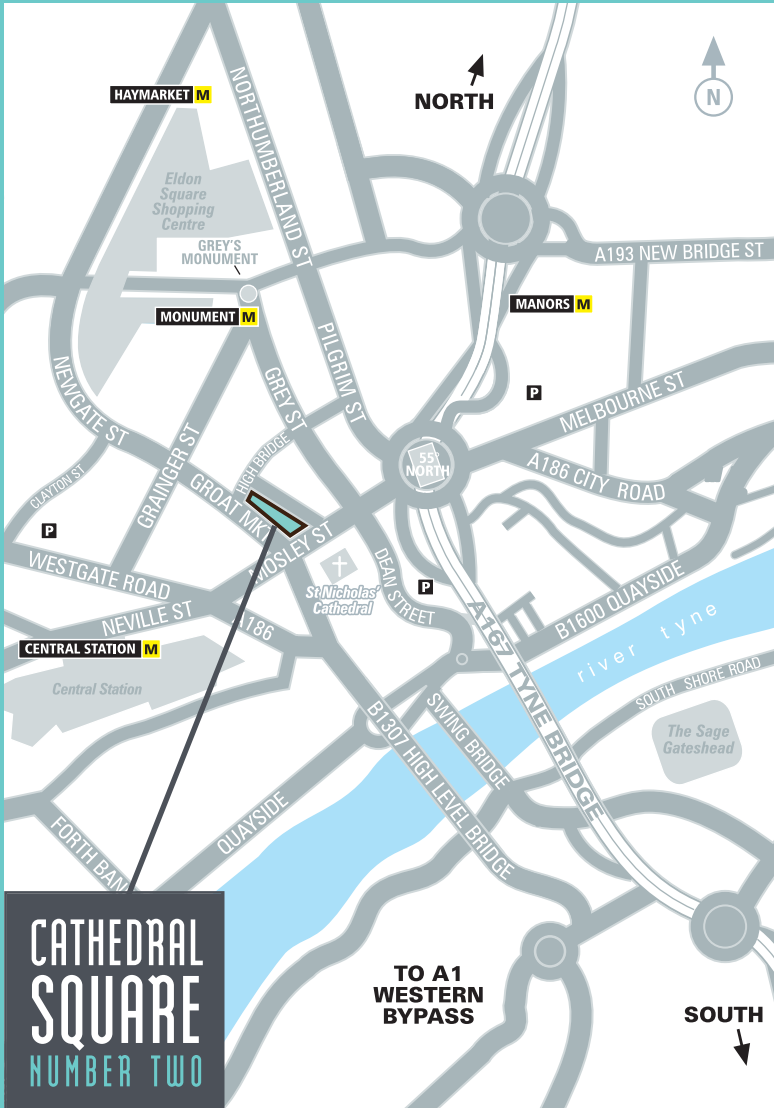


[WWW.CATHEDRALSQUARE.CO.UK](http://WWW.CATHEDRALSQUARE.CO.UK)



# NUMBER TWO CATHEDRAL SQUARE

WWW.CATHEDRALSQUARE.CO.UK



**GAVINBLACK**  
— & PARTNERS —  
**0191 230 2777**  
184 PORTLAND ROAD, JESMOND  
NEWCASTLE UPON TYNE NE2 1DJ

chris@gavinblack.co.uk  
laura.lloyd@gavinblack.co.uk

**Knight Frank**  
**0191 221 2211**  
**KnightFrank.co.uk**

patrick.matheson@knightfrank.com  
rebecca.maddison@knightfrank.com

Designed & produced by **iMS** Design 0191 284 9222 ref: 6422

**IMPORTANT NOTICE** 1. Particulars: These particulars are not an offer or contract, nor part of one. You should not rely on statements by the agents in the particulars or by word of mouth or in writing ("information") as being factually accurate about the property, its condition or its value. Neither agents has any authority to make any representations about the property, and accordingly any information given is entirely without responsibility on the part of the agents, seller(s) or lessor(s). 2. Photos etc: The photographs show only certain parts of the property as they appeared at the time they were taken. Areas, measurements and distances given are approximate only. 3. Regulations etc: Any reference to alterations to, or use of, any part of the property does not mean that any necessary planning, building regulations or other consent has been obtained. A buyer or lessee must find out by inspection or in other ways that these matters have been properly dealt with and that all information is correct. 4. VAT: The VAT position relating to the property may change without notice. September 2016.