



EARL GREY HOUSE

75-85 GREY STREET
NEWCASTLE UPON TYNE NE1 6EF

Office suites available from 1,950 to 7,320 sq ft



Target office

REWRITING HISTORY WITH BOLD IDEAS

A NEWLY DESIGNED RECEPTION
BY AWARD WINNING
ELLIOTT ARCHITECTS





LED LIGHTING



EXPOSED VRF AIR CONDITIONING



NEW SHOWERS, CHANGING FACILITIES AND CYCLE RACKS



MANNED RECEPTION



FULL ACCESS METAL RAISED FLOORS



2X PASSENGER LIFTS

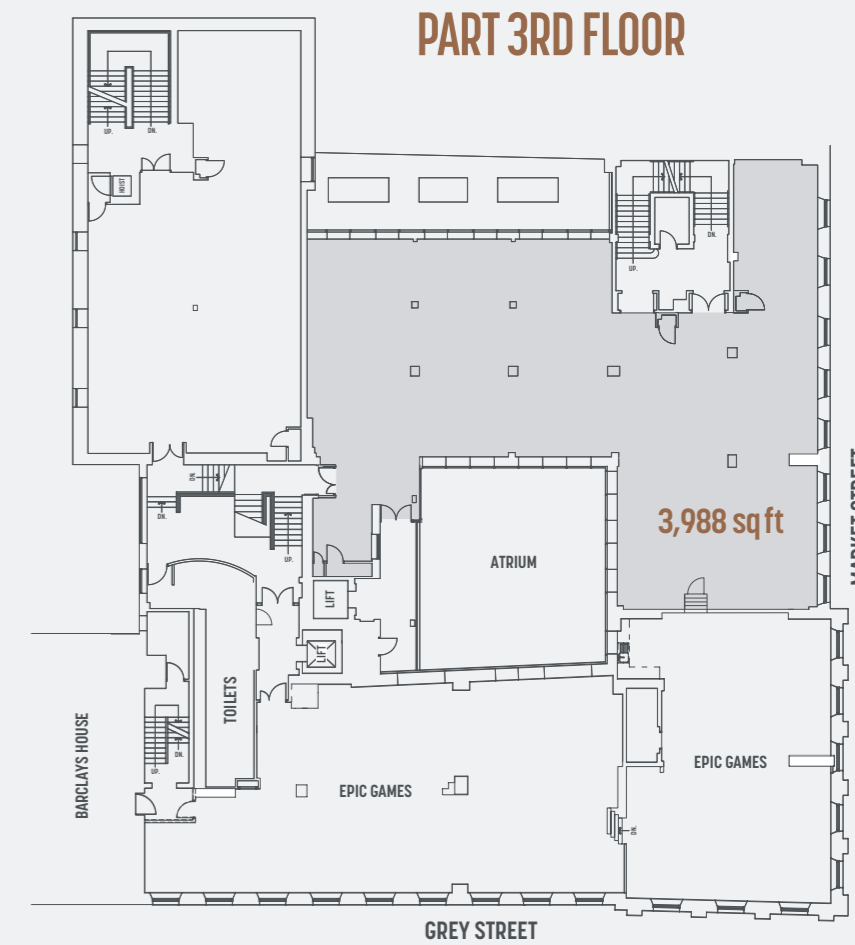
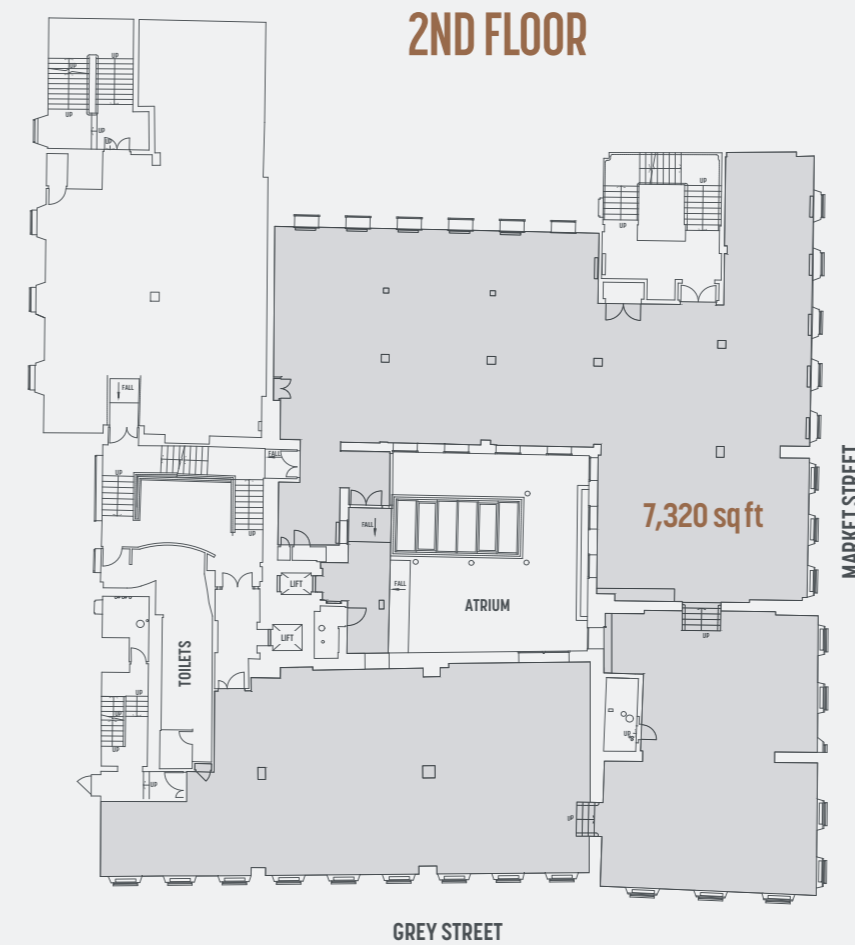
ACCOMMODATION SCHEDULE

PART 1ST FLOOR MEZZANINE	181.16 sq m	1,950 sq ft
2ND FLOOR OFFICE	680 sq m	7,320 sq ft
PART 3RD FLOOR OFFICE	370 sq m	3,988 sq ft

CONNECTIVITY

Earl Grey House has significant IT infrastructure available through Backbone Connect, providing a dedicated IT service to the building and offering occupiers a range of business connectivity, telephony and cloud solutions. Backbone can provide these essential business services faster than other providers and at a rate unique to occupiers of the building.

www.backboneconnect.co.uk



Specification also includes self-contained toilet facilities and on-site parking

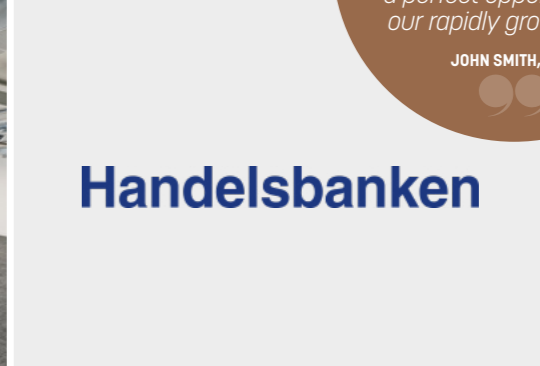


Grey Street is said to be one of the most beautiful streets in England, coupled with city centre amenities, Grey Street is an unrivalled business location.



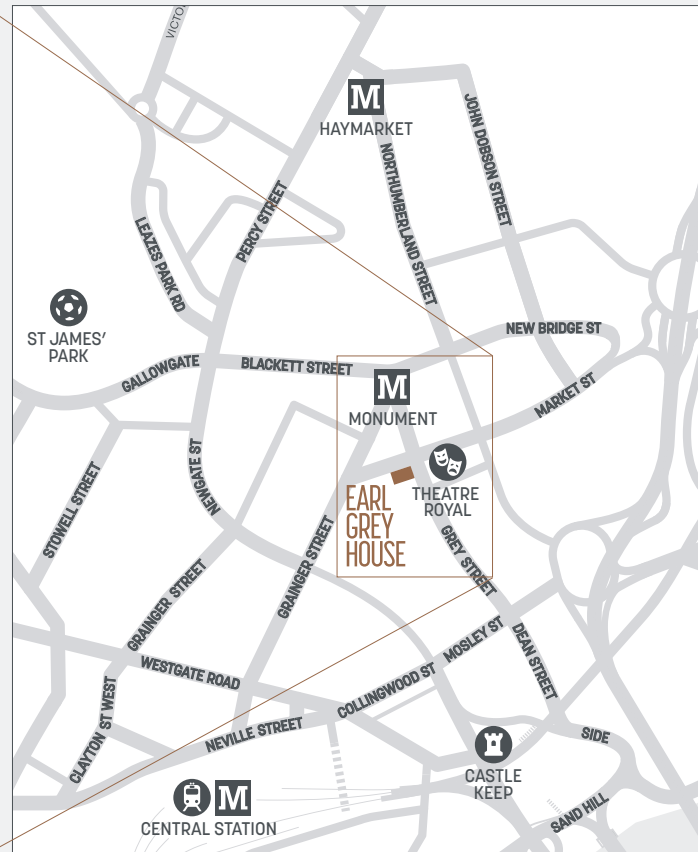
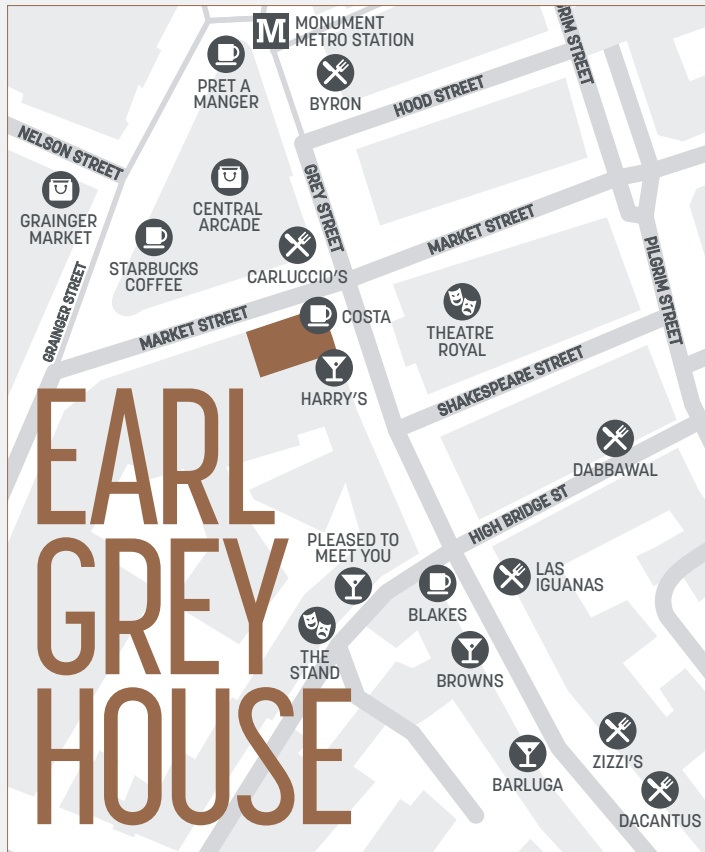
Earl Grey House offers us high quality office accommodation at a prime location within the City and presents a perfect opportunity for our rapidly growing firm.

JOHN SMITH, EPIC



EVERYMAN

Located at lower ground floor of Earl Grey House is an Everyman boutique 4 screen cinema, bar and restaurant.



CONTACT US
FOR A VIEWING
OR MORE
INFORMATION:



Patrick Matheson
Patrick.Matheson@knightfrank.com
Hannah Ives
Hannah.Ives@knightfrank.com



Tony Wordsworth
Tony.Wordsworth@avisonyoung.com

MISREPRESENTATION

Avison Young and Knight Frank for themselves and for the vendors or lessors of this property whose agents they are, give notice that:

- (i) the particulars are set out as a general outline only for the guidance of intending purchasers or lessors and do not constitute, nor constitute part of, an offer or contract.
- (ii) all descriptions, dimensions, references to condition and necessary permission for use and occupation, and other details, are given in good faith and are believed to be correct but any intending purchasers or tenants should not rely on them as statements or representations of fact but satisfy themselves by inspection or otherwise as to the correctness of each of them.
- (iii) no person in the employment of Avison Young and Knight Frank has any authority to make or give any representation or warranty whatever in relation to this property.
- (iv) all rentals and prices are quoted exclusive of VAT.

Designed by: The Roundhouse Design Consultants, Newcastle upon Tyne.
Brochure and Photos: March 2019