
One
Millennium Quay

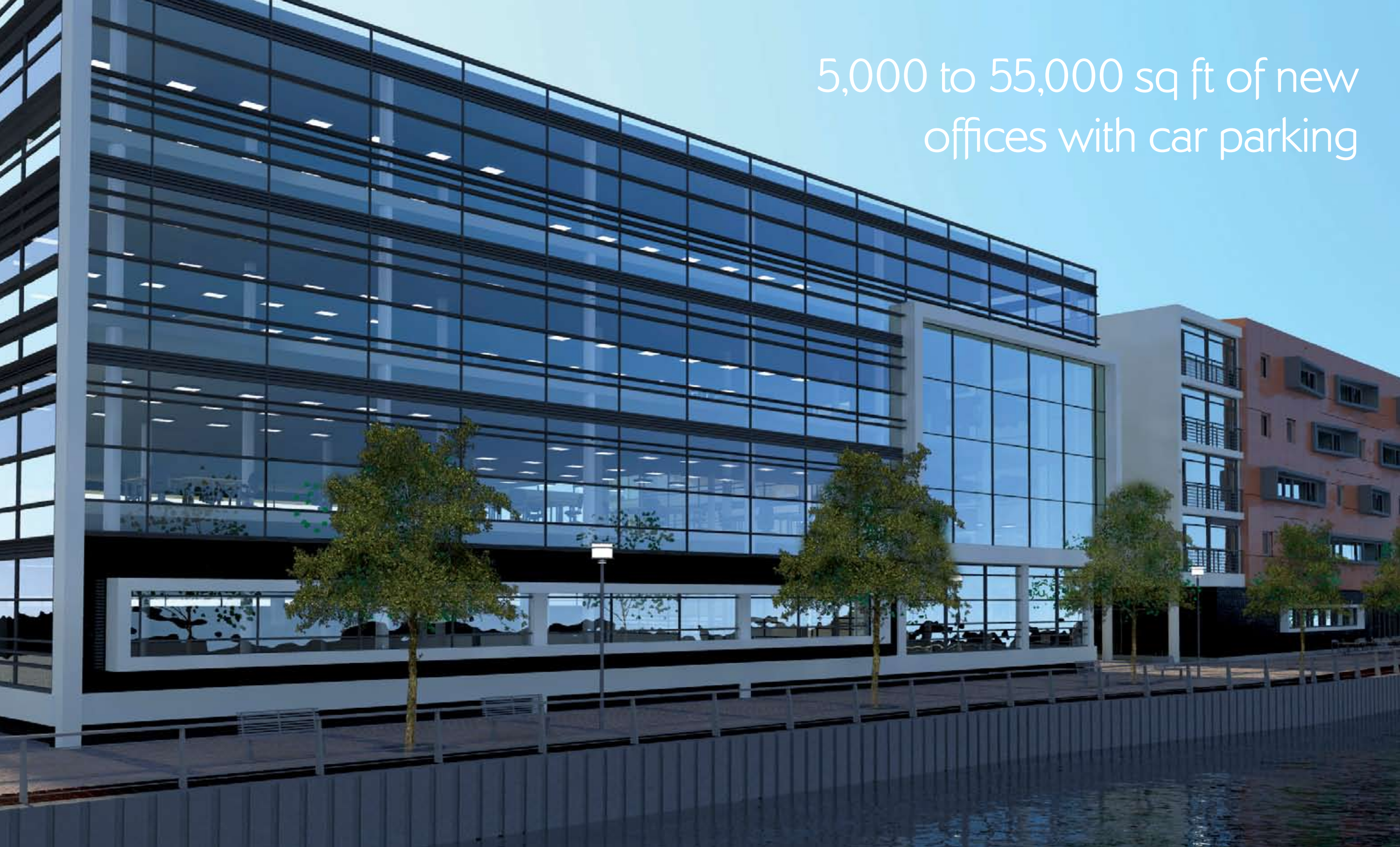
New Waterfront Offices

World renowned views from your office...

...whichever way you look



5,000 to 55,000 sq ft of new
offices with car parking



One Millennium Quay, 55,000 sq ft of prime waterfront offices at the heart of one of Europe's most exciting and vibrant city centre quaysides.



at the forefront of business



One Millennium Quay

Jurys Inn Hotel

on the waterfront

The Millennium Bridge links the conurbations of Newcastle and Gateshead symbolising the remarkable renaissance of the region making it one of the most important and successful business and leisure locations.



at the forefront of the city

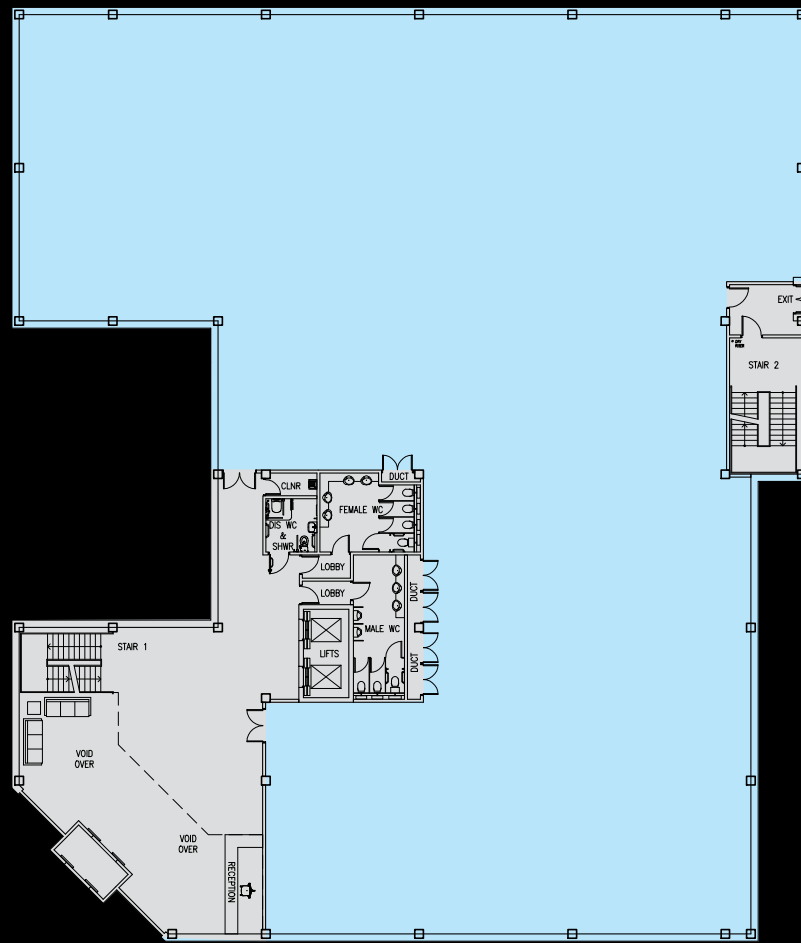
Two City Centre Universities attract over 50,000 students every year 9,000 of which are from overseas and in addition Newcastle and Gateshead Colleges have over 43,000 students. Newcastle Gateshead offers your business a skilled, highly loyal and readily available workforce.

The Quayside offers one of Europe's most iconic cultural, gastronomic and leisure destinations.

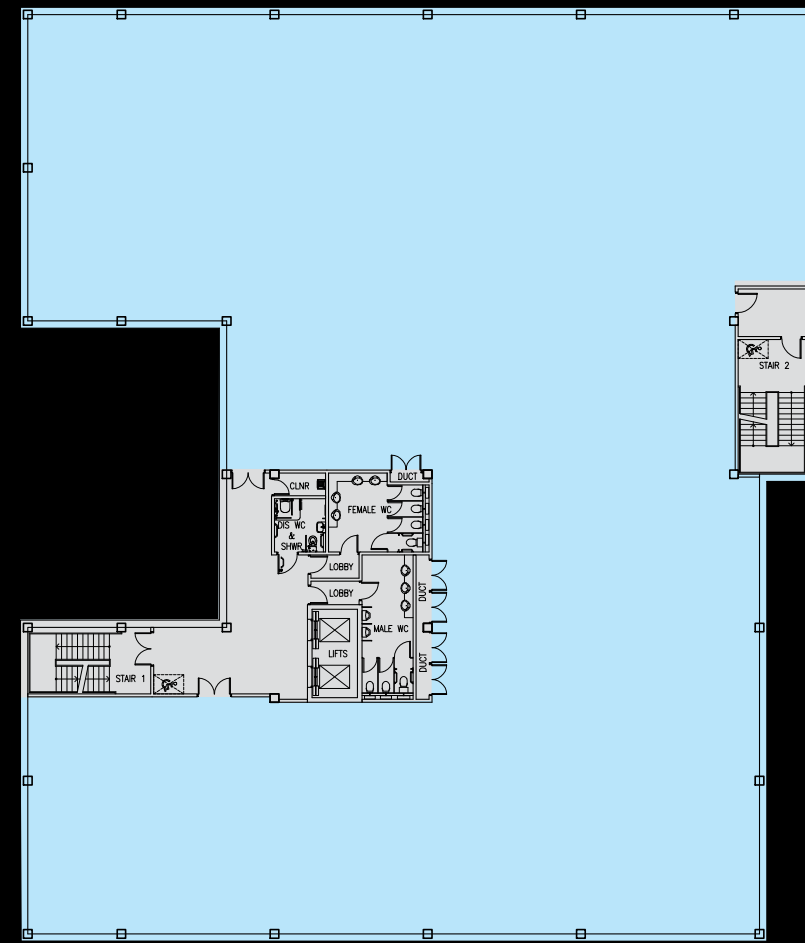


- 1 One Millennium Quay
- 2 Baltic Place
- 3 Baltic Business Quarter
- 4 Baltic Quay
- 5 The Baltic Centre
- 6 GQ2
- 7 The Sage Gateshead
- 8 The Millennium Bridge
- 9 Newcastle Quayside
- 10 The Tyne Bridge
- 11 Central Station
- 12 Eldon Square Shopping

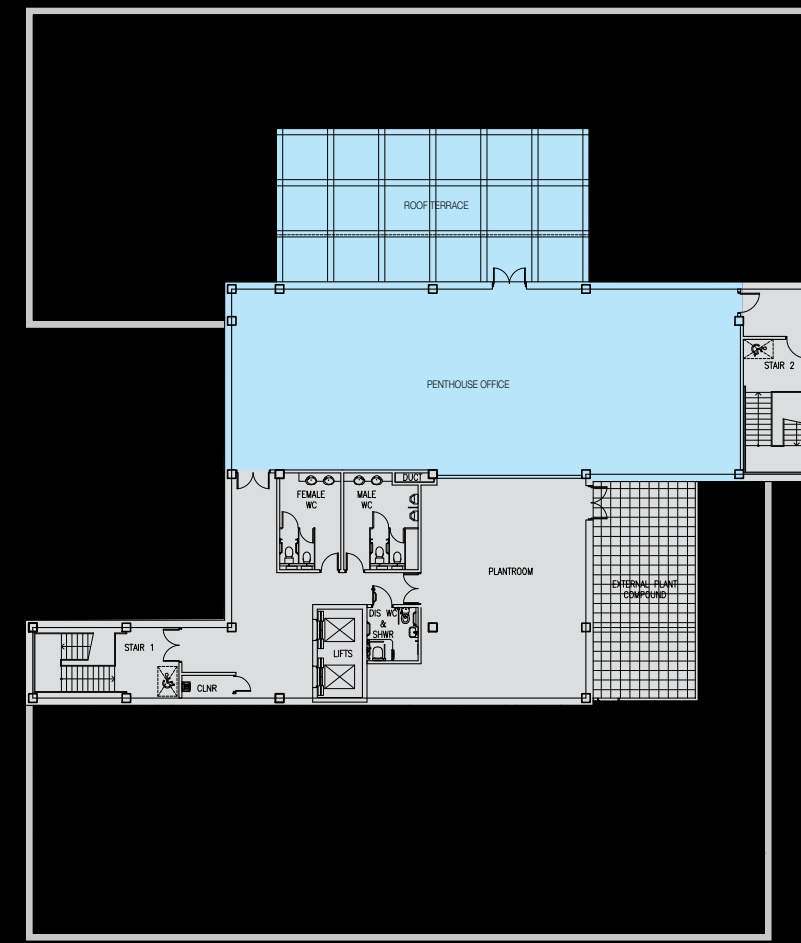
Ground Floor



Typical Upper Floor



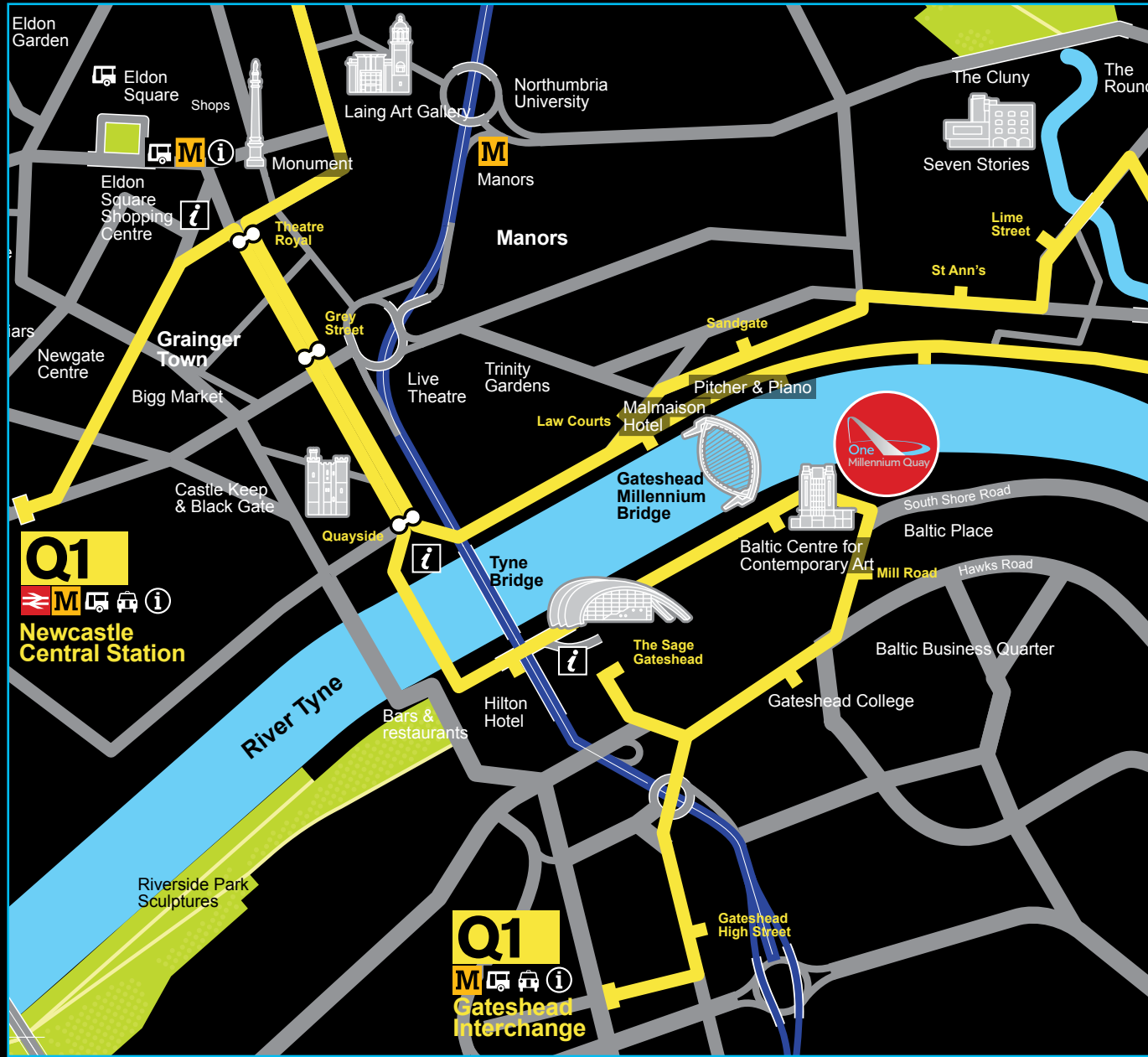
Penthouse Office & Roof Terrace



21st Century specification

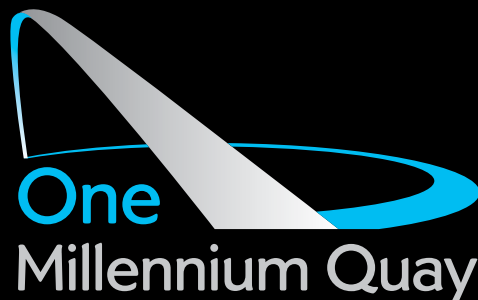
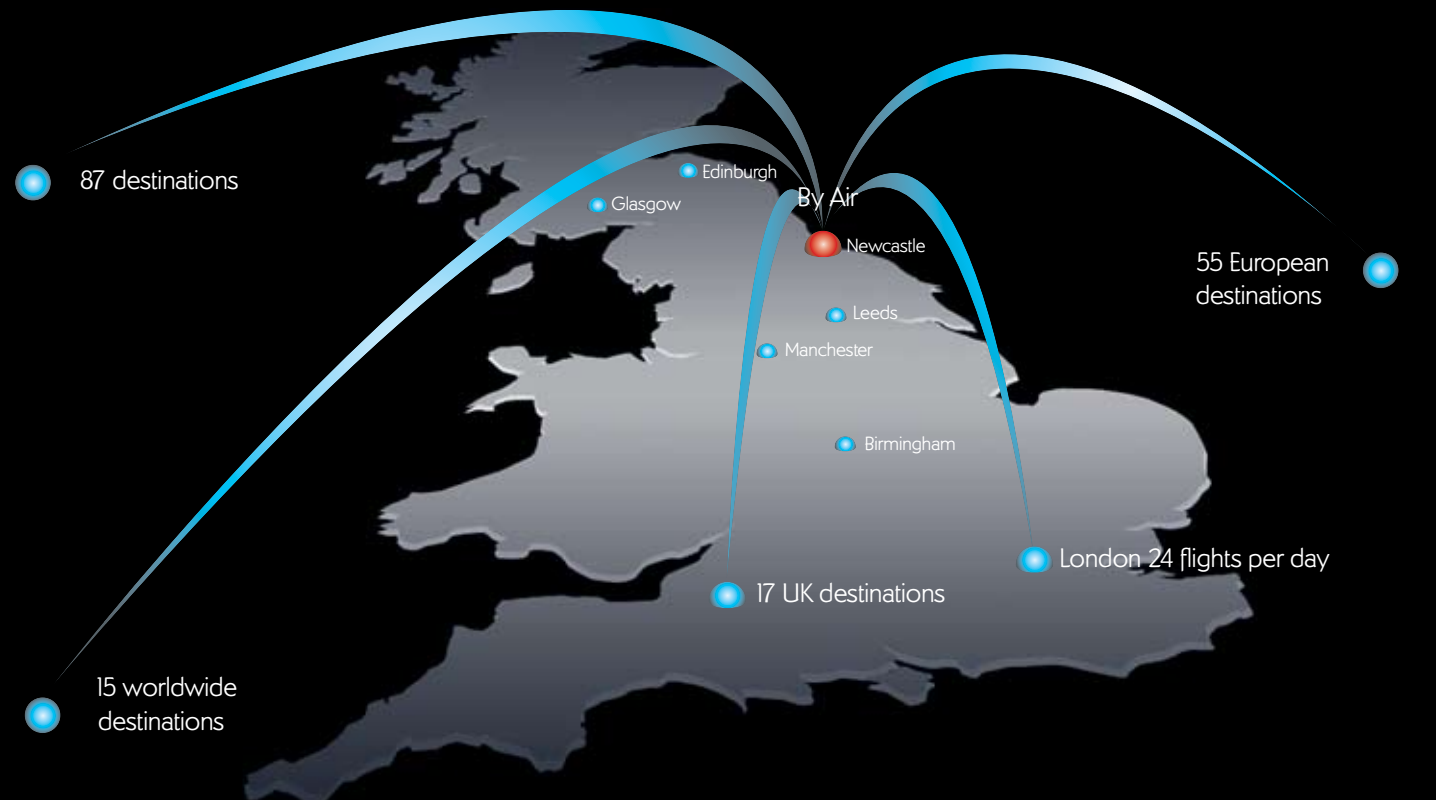
ACCOMMODATION	RECEPTION	GROUND	FIRST	SECOND	THIRD	PENTHOUSE	TOTAL
SQ. FT NIA	2,200	12,000	12,000	13,300	13,300	2,200	55,000
SQ. M NIA	204	1,115	1,115	1,236	1,236	204	5,110

at the forefront of the modern office



SAT NAV: NE8 3BA

By Rail	Leeds 1.20 hrs	By Road	Leeds 1.30 hrs
	Edinburgh 1.27 hrs		Edinburgh 2.35 hrs
	Glasgow 2.20 hrs		Glasgow 2.52 hrs
	Birmingham 3.10 hrs		Birmingham 3.30 hrs
	London 2.45 hrs		Manchester 2.40 hrs



www.onemillenniumquay.com

Important notice

1. Particulars: These particulars are not an offer or contract, nor part of one. You should not rely on statements by Knight Frank LLP/Sanderson Weatherall LLP in the particulars or by word of mouth or in writing ("information") as being factually accurate about the property, its condition or its value. Neither Knight Frank LLP/Sanderson Weatherall LLP has any authority to make any representations about the property, and accordingly any information given is entirely without responsibility on the part of the agents, seller(s) or lessor(s). 2. Photos etc: The photographs show only certain parts of the property as they appeared at the time they were taken. Areas, measurements and distances given are approximate only. 3. Regulations etc: Any reference to alterations to, or use of, any part of the property does not mean that any necessary planning, building regulations or other consent has been obtained. A buyer or lessee must find out by inspection or in other ways that these matters have been properly dealt with and that all information is correct. 4. VAT: The VAT position relating to the property may change without notice. September 2009.

C2 Design & Production / 0113 383 5332 / www.c2advertising.co.uk

Another exciting development by:



Please contact the joint agents:

